

Jackson County Historical Society News

VOLUME EIGHTEEN, NUMBER THREE

AUGUST 2011



photograph of the Jefferson Roller Mill

The Jackson County Historical Society will meet at the Civic Center in Jefferson on August, 2011 at 2:30 p.m.

Cecil Buffington and Richard Carter will present a program on the Curry Creek Bridge and Wilkins Industry. There will be a short stroll to the Mill site after the program.

direction: From I85, take US 129 S towards Jefferson. Travel 5 miles to the first light. Turn left onto GA 11 N/Winder Hwy, turn left about 1 mile, turn left onto Storey Street. Travel 1 block, and the Civic Center is on the right.

The hot dog picnic will be held at Hurricane Shoals Park at Pavillion #4 on September 22 at 6:30 p.m. *Take Interstate 85 N. Exit at Dry Pond Exit #140. Turn right onto GA Highway 82. Follow GA 82 until it dead ends (GA 82 will turn right) and turn left onto GA 82 SPUR. Proceed on GA 82 SPUR toward Maysville, cross over Interstate 85 and go less than one mile. Entrance to Hurricane Shoals Park will be on your right before crossing the North Oconee River Bridge.*

Jackson County Historical Society

P.O. Box 1234, Commerce, Georgia 30529

(706) 335-5946

Collection

The Historical Society's collection of books, files and research materials are housed in the Heritage Room of the Commerce Public Library. The library has generously provided computers, microfilm readers and copiers and expanding space in their future addition. We are in need of volunteers to assist researchers and keep the collection organized. If you are available to assist, contact Annabel Seltzer at abseltzer@windstream.net

Membership

Dues run from August to August and can be mailed to:
Jackson County Historical Society
P. O. Box 1234, Commerce, GA 30529

Individual -\$15, Family -\$25, LIFE members -\$100

JCHS Officers 2010-2011

President: Mary Lynn Bell

Vice-President: Shirley Wilson

Recording Secretary: Boniface McDaniel

Treasurer: Tommy Benton

Directors: James Mathis

Ann Jarrett

Jerry Legg

Past Presidents: the late, Joyce Ethridge

Ann A. Jarrett

the late, Richard Chambers

the late, Jean H. Booth

Betty Ann Mathis

James Mathis

Ralph Freeman

Carol Tanner

Marie Parks

Tina Harris

Charlotte Mealar

Newsletter Editor: Tina Harris

Back newsletter issues can be obtained for \$3.00 each plus postage. Some of the past newsletters can be viewed online at:
rootsweb.com/~gajackso/

Historical Society Meeting Schedule

August 21, 2011-Jefferson Civic Center- Jefferson Roller Mill and Wilkins Industries- 2:30 p.m.

September 22, 2011-Hurricane Shoals, hot dog picnic, Pavillion #4; 6:30 p.m.

November 13, 2011-Oconee Baptist Church; 2:30 p.m.

February 19, 2012-Harmony Grove; 2:30 p.m.

May 20, 2012-Tour of the Historic Courthouse

Events

September 17, 2011-Art in the Park at Hurricane Shoals- 10 a.m.-6 p.m.

October 15, 2011-Historic Courthouse fundraiser at Jefferson Civic Center; 7 - 9 pm

Curry Creek

The Jefferson Roller Mill was located on Curry Creek in Jefferson next to the bridge.

The Curry Creek bridge is a local landmark in Jefferson. Built in 1925 to replace a wooden covered bridge, it incorporated the latest engineering technology in its solid concrete arch design. Originally it had cast iron street lamps.

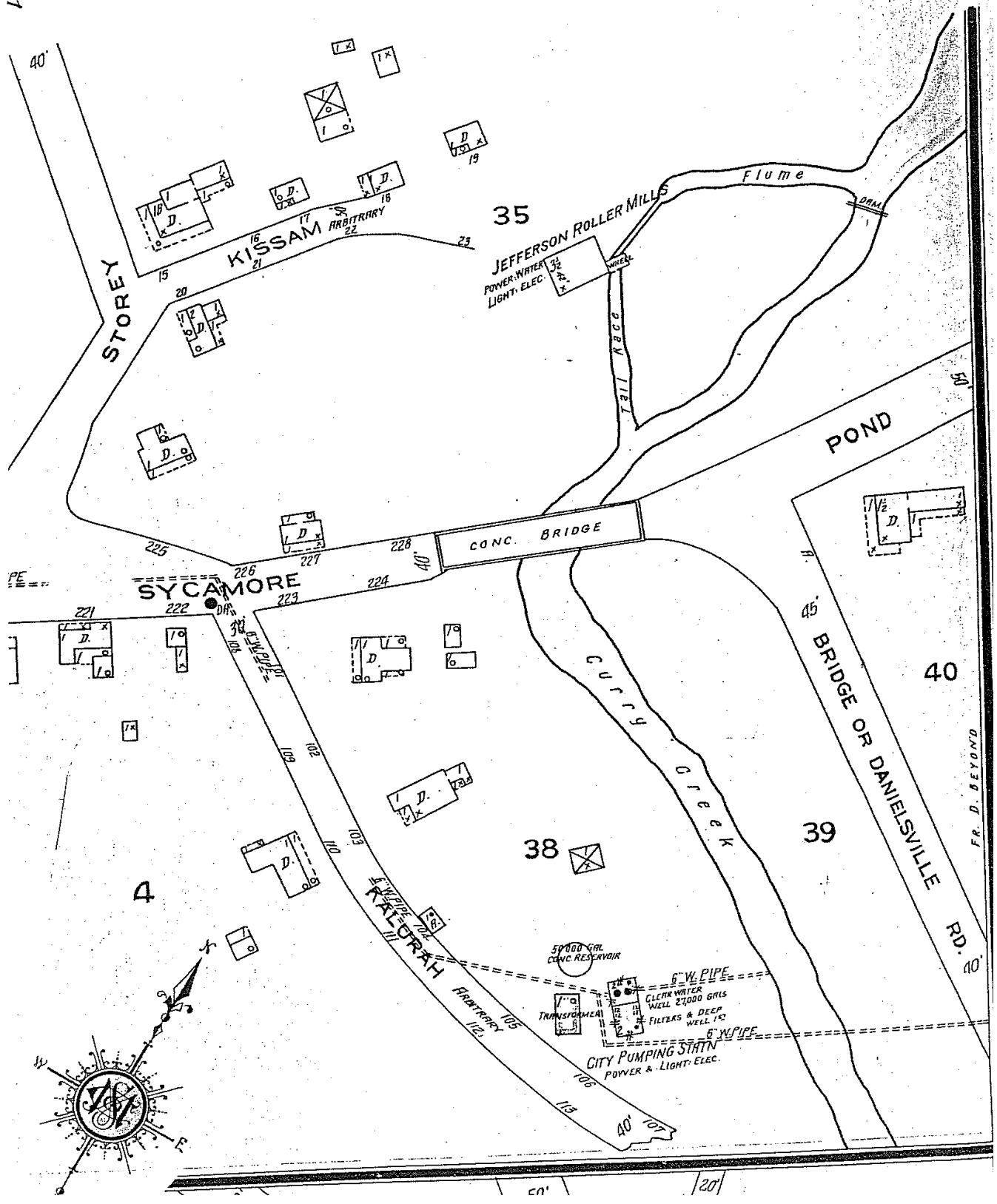


photo above: Wooden covered bridge built in 1900 across Curry Creek in Jefferson

photo to the right: 1926 Sandborn map shows the Jefferson Roller Mill and the Curry Creek bridge.

1922

SANDBORN MAP



Jackson County Historical Society

P.O. Box 1234 Commerce, Georgia 30529



Hoods Mill in Apple Valley

In 1881, it was reported in the Jackson Herald that Mr. C. W. Hood purchased the old Burn's Mill on the North Oconee River several year earlier and secured the service of Millwright, T. A. Panel of Gainesville. Mr. Panel put in four new turbines wheels, each running on a separate set of rocks, two for wheat and two for corn. In every part of construc-

tion special care was given to prevent waste. All the gearing that rans the elevators, bolters, smutters, etc. were entirely new.

With the improvements made, Mr. Hood has increased the value of his property at least 50 percent, and it cost him every dollar of it. He has the consolation of knowing he has the best mill in the county and can keep half of Jackson county in meal and flour. The increased custom will amply repay him for the investment.



Johnson Mill in Galilee community